

2/2 WAY DIRECT ACTING SOLENOID VALVE, G 1/8" - G 1/4"

COMMON FEATURES

Body material: stainless steel (1.4305 EN 10088/AISI 303)
 Orifice material: stainless steel (1.4305 EN 10088/AISI 303)
 Operator material: stainless steel
 Protection class: IP 65 (with connector and gasket)

OPTIONS

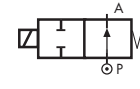
Available with body thread connection 1/8" (e.g. code RD298DVA), performance ratings remain the same as RD299DVA
 Silver shading ring (e.g. code RD299DVCΔ)

NPT connection on request, minimum batch may be required (e.g. code RD298DVG N)

NOTES

Normally open version not available for orifice > Ø 3 mm
 Protective treatment of operators is recommended, minimum batch may be required

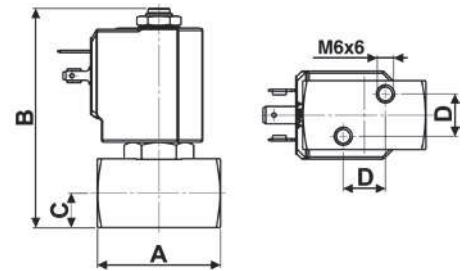
TYPE: RD298/299



Normally Open



DIMENSIONS & WEIGHTS		RD298	RD299
G connection	[ISO 228]	1/8"	1/4"
A	[mm]	45	45
B	[mm]	77.5	77.5
C	[mm]	12.5	12.5
D	[mm]	15.4	15.4
weight	[kg]	0.36	0.36



Flow direction overseat 1 → 2

VALVE	nominal Ø	flow rate Kvs	OPD			COILS	
			min.	max. AC	max. DC	class 'H' only	
code	[mm]	[l/min]	[barg]	[barg]	[barg]	code	[Volts/Hz]
RD299DVA	1.0	0.6	0	30	30	7251	24v DC
RD299DVG	2.5	3.3	0	16	16	7201	24v 50/60Hz
RD299DVH	3.0	4.5	0	10	10	7401	110v 50Hz - 120v 60Hz
						7601	200v 50Hz - 220v 60Hz
						7701	230v 50Hz - 240v 60Hz

RD298/299 - FKM seal, NO -

Media: water, oil, air and aggressive fluids
 Media temperature: -10°C ÷ +130°C
 Ambient temperature: -10°C ÷ +50°C
 Seal material: foodgrade FKM
 Coil power: AC 18va (holding)
 AC 36va (inrush)
 DC 14w

OPTIONS

EPDM seal, temperature max. 120°C (e.g. code RD299DEG)

VALVE	nominal Ø	flow rate Kvs	OPD			COILS	
			min.	max. AC	max. DC	class 'H' only	
code	[mm]	[l/min]	[barg]	[barg]	[barg]	code	[Volts/Hz]
RD299DRA	1.0	0.6	0	100	100	7251	24v DC
RD299DRB	1.2	0.7	0	85	85	7201	24v 50/60Hz
RD299DRC	1.5	1.2	0	55	55	7401	110v 50Hz - 120v 60Hz
RD299DRE	2.0	2.3	0	25	25	7601	200v 50Hz - 220v 60Hz
RD299DRG	2.5	3.3	0	19	19	7701	230v 50Hz - 240v 60Hz
RD299DRH	3.0	4.5	0	10	10		

RD298/299 - RUBY seal, NO -

Media[Ⓜ]: water and liquids
 Media temperature: -10°C ÷ +130°C
 Ambient temperature: -10°C ÷ +50°C
 Seal material: Ruby
 Coil power: AC 18va (holding)
 AC 36va (inrush)
 DC 14w

NOTES

Ⓜ Not 100% leak-proof when used with air/gases.
 Approximate leak rate is 1,5 ml/min at max. OPD.

