



Ultrasonic Flow Meter

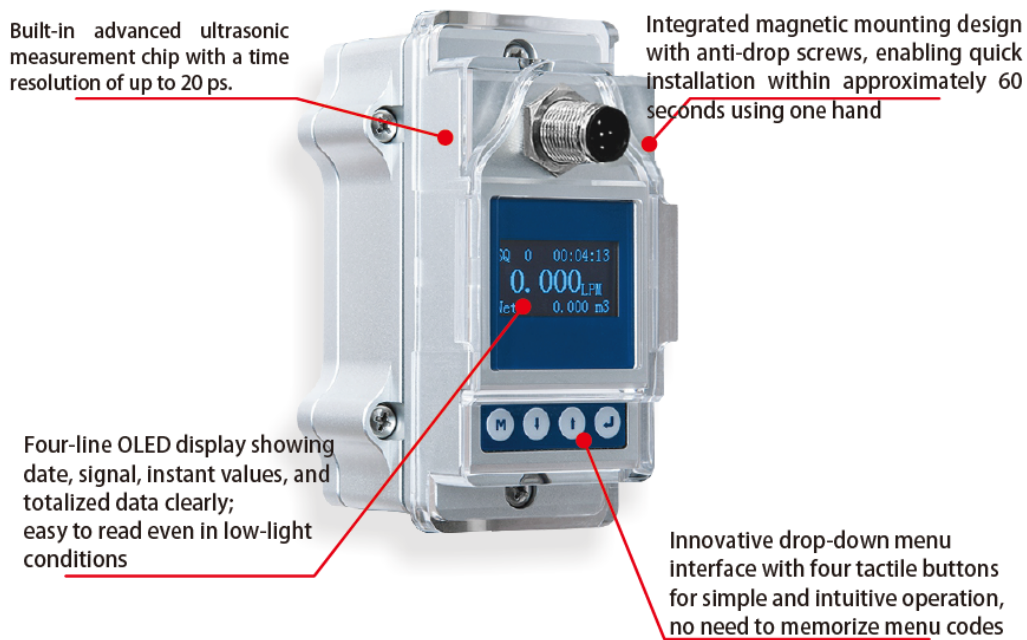
KLUFM Series

We specialize in the development of flow measurement technologies.

Our products are designed to measure the flow of various liquids in pipelines, enabling real-time monitoring in production processes.

With both digital and analog signal outputs, the system supports process measurement and control.

Typical applications include semiconductor, medical/pharmaceutical, chemical processing, fine chemicals, cleaning systems, and food & beverage industries.



Features

- ◆ Clamp-on design allows installation directly on the pipe without modification.
- ◆ Easy setup via menu operation, no specialized knowledge required.
- ◆ No moving parts, resulting in zero pressure loss and enabling installation without system downtime.

Specifications

Accuracy	±2.0%(0.3m/s ~ 5.0m/s)
Velocity	0.1 m/s ~ 5.0m/s
Linearity	±2.0%(0.3m/s ~ 5.0m/s)
Repeatability	0.8%
Response time	500ms
Display	1.3" 128×64 OLED (rotatable display)
Language	English
Display unit	m ³ /h · LPM · GPM · LPH · Default m ³ /h
Display data	Instant flow rate, velocity, net totalizer, batch totalizer, and cumulative totals (daily, monthly, yearly)
Totalizer	7 bit digit



Ultrasonic Flow Meter

KLUFM Series

Totalizer data	10 years 64 months 64 days
Keypad	Four light touch buttons
Battery	CR1220
Power supply	24VDC@3W
Output	4-20mA · max. load 600Ω
Communication	RS485 (Modbus RTU)
Alarm Output	OCT high/low alarm, pulse output(optional)
Fluid	Water, solvent, chemical reagent(impurity ≤ 4%)
IP Grade	IP54/IP65
Pipe Size	OD9.53-OD220(DN6-DN200)
Medium Temp.	-10°C-50°
Env. Temp.	-10°C-50°C
Env. Humidity	0-95% relative humidity, without condensation
Viscosity	<300CST(mm ² /s)
Cable Length	2meter

Industrial application

Since its introduction to the market, the product has been widely adopted in the cleaning equipment industry.

With easy installation, intuitive operation, and reliable measurement performance, it has gradually expanded into various industrial applications.

Major industries include semiconductor, food processing, pharmaceutical, beverage water, cleaning products, textile dyeing, and chemical industries.

In practical applications, the variety of media encountered often exceeds expectations, covering a wide range of types with different viscosities.

Through on-site testing and adjustments, users are able to identify suitable measurement solutions, allowing the range of applications to continuously expand.





Ultrasonic Flow Meter

KLUFM Series



Suitable Media

The product is suitable for flow measurement of a wide range of clean, single-phase liquids. It is primarily used for the measurement and control of water, including tap water, purified water, and ultra-pure water.

With the expansion of application fields, it has also been widely used for various acids, alkalis, organic liquids, chemical solvents, alcohols, and beverage liquids.

Verified Media (Based on Customer Applications): Diluted sulfuric acid, Alcoholic beverages, Hydrocarbons, Alcohol, Sodium chlorate, Sodium carbonate, Triethanolamine, Ethylenediamine, Propylene oxide... etc.

Suitable conditions can be evaluated based on the following:

1. Stable flow of the medium within the pipeline
2. System pressure maintained at approximately 3 Bar
3. No formation of bubbles or cavitation during flow

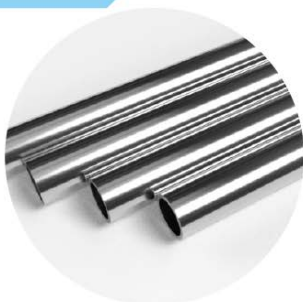
As applications continue to expand, the range of measurable media is also increasing. For special fluids or specific requirements, please feel free to contact us.

Compatible Pipe Materials

The product is compatible with a wide range of acoustically conductive pipe materials, including both metal and plastic pipes.

Through simple menu settings, a single flow meter can be configured to measure different pipe materials, supporting both metal and plastic pipe applications.

Metal Pipes



Stainless Steel Pipes



Carbon Steel Pipes



Copper Pipes



Ultrasonic Flow Meter

KLUFM Series

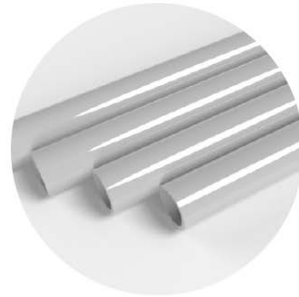
Plastic Pipes



PVDF



PVC/CPVC



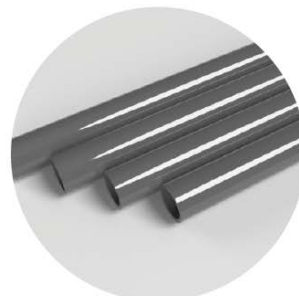
PPR



PPH



PFA/PU



HDPE

Flow Rate Range

The product is suitable for both metal and plastic pipe applications. Due to variations in pipe materials and standards, outer diameters may differ. These factors have been taken into account in the design, allowing compatibility with a wide range of pipe outer diameters (minimum to maximum).

Please ensure that the specified minimum and maximum outer diameter range matches the actual pipe dimensions at the installation site when placing an order.

Model	KLUFM-9	KLUFM-15	KLUFM-20	KLUFM-25
Tube O.D.	ϕ 9.53	ϕ 15	ϕ 20	ϕ 25
DN(Metric)	DN6	DN10	DN15	DN20
DN(Imperial)	1/8"	3/8"	1/2"	3/4"
Tube OD. Range	9.53-12.7	14-17	17-20	22-30
Flow Range	0.2-20	0.57-50	0.92-70	1.36-150

*The above values represent the measurable flow range (0.1–5.0 m/s).

The specified accuracy applies within the range of 0.3–5.0 m/s.