

## VBM 系列 VBM SERIES



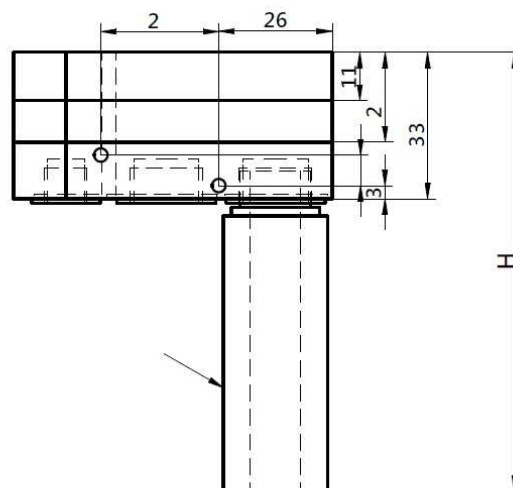
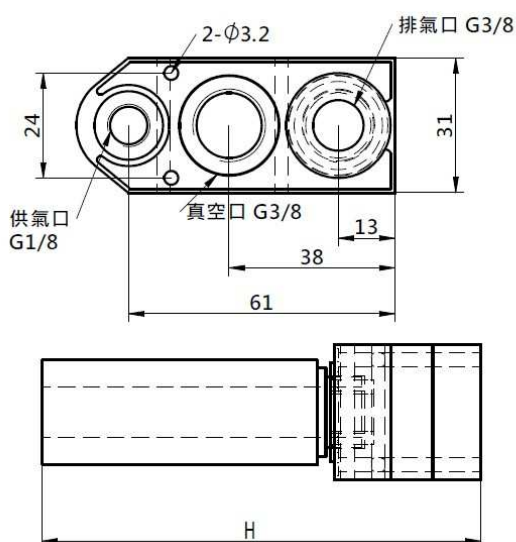
- ◇ 迷你體積、輕巧、緊湊  
Compact size and design, light
- ◇ 採用多級真空發生原理、更低耗能  
Multistage vacuum principal, lower energy consumption
- ◇ 泵體可以在多種氣體中應用  
Pump body is compatible with many gases
- ◇ 最大供氣壓力 7bar  
Max supply pressure 7 bar
- ◇ 連接螺紋採用金屬鑲嵌式密封更穩定  
Connecting thread is more stable with metal female thread.

## 產品規格 SPECIFICATION

型號 Model	最佳供氣壓力(Bar) Supply pressure	最大真空度(-kpa) Max. vacuum level	最大真空流量(L/min) Max Quantity of sucked air	空氣消耗(L/min) Air consumption
VBM201	4.5~5	92	82	32~45
VBM 202	-	-	140	64~90
VBM203	4.5~5	92	200	90~130

型號 Model	連接口尺寸 Port size			軟管內徑 Tube $\phi$ I.D.	
	供氣口 $\text{\textcircled{P}}$ Air Connection	真空口 $\text{\textcircled{V}}$ Vacuum connection	排氣口 $\text{\textcircled{E}}$ Exhaust	供氣 Air Connection	真空 Vacuum connection
VBM201	G1/8"	G3/8"	外置消音器	$\phi 3$	$\phi 5$
VBM202	G1/8"	G3/8"	External	$\phi 4$	$\phi 8$
VBM203	G1/8"	G3/8"	Silencers	$\phi 6$	$\phi 10$

## 外觀尺寸 OVERALL DIMENSION



	VBM201.202	VBM203
H	90	99.5