

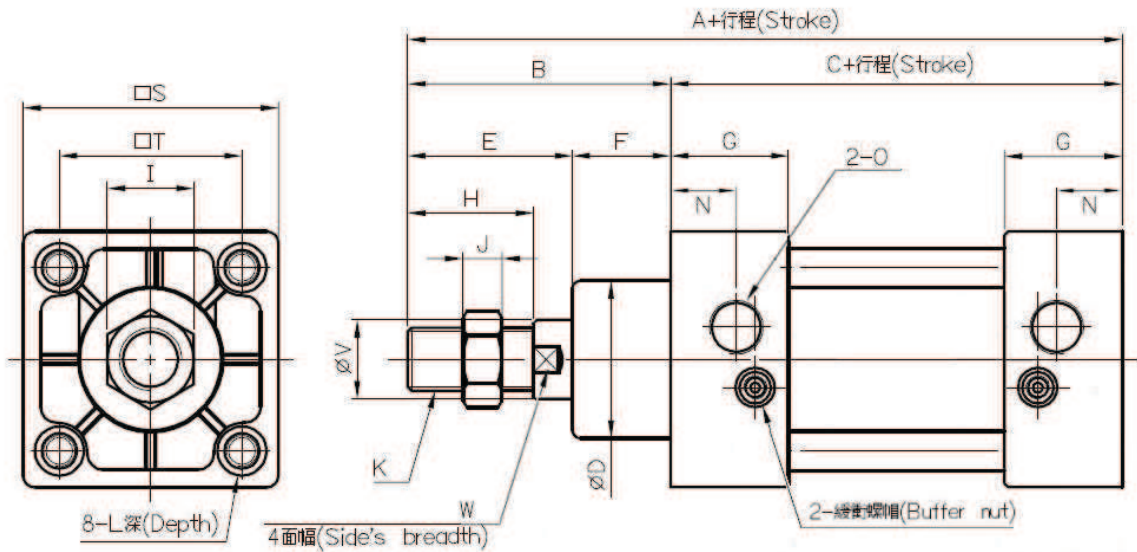


# SC Series Cylinder



# SC 系列標準氣缸

## SC Series Standard Cylinder



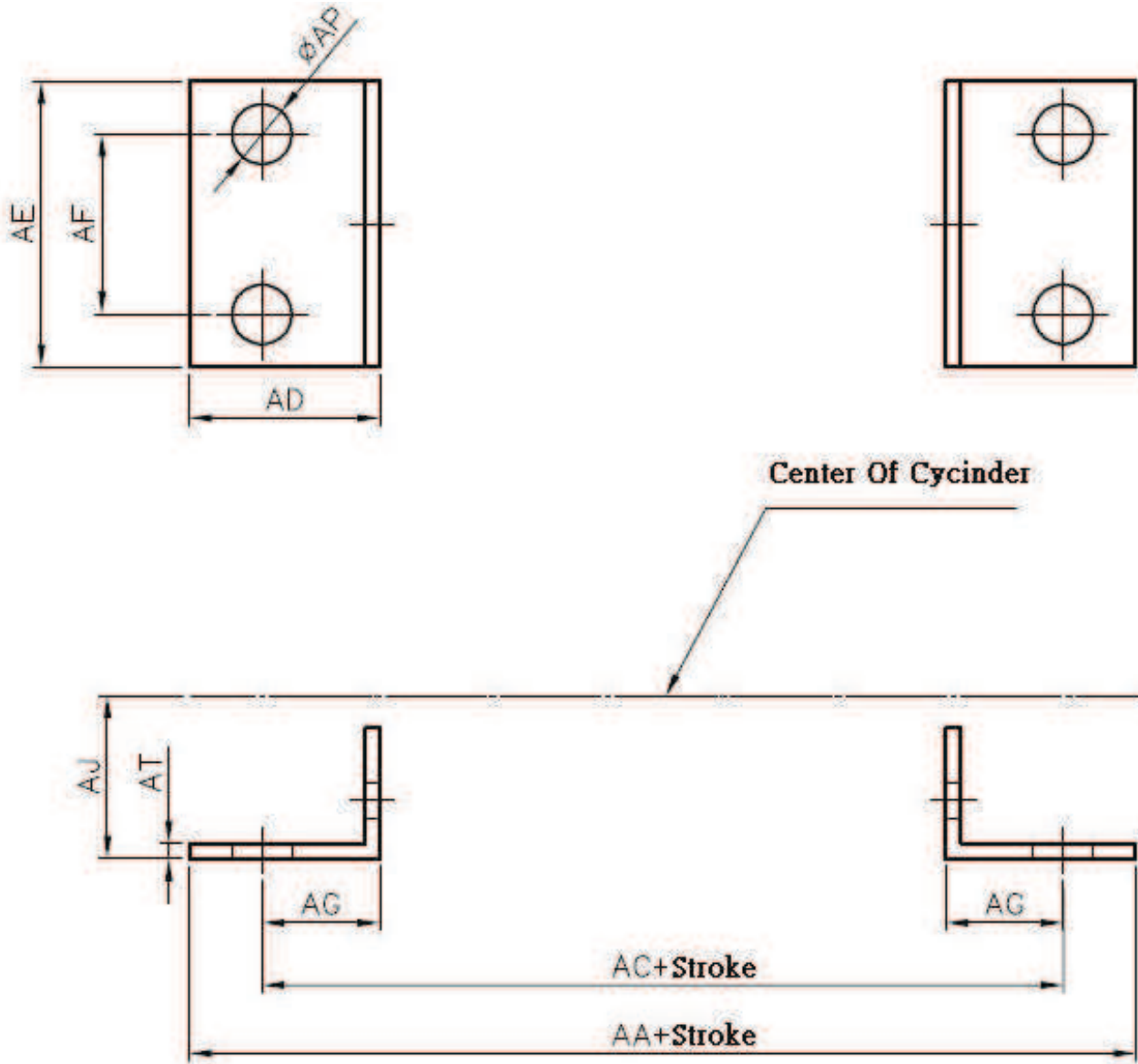
Dia	A	B	C	D	E	F	G	H	I	J
32	140	47	93	26	32	15	27.5	22	17	6
40	142	49	93	30	34	15	27.5	24	19	7
50	150	57	93	36	42	15	27.5	32	24	8
63	153	57	96	36	42	15	27.5	32	24	8
80	183	75	108	47	54	21	33	40	30	10
100	183	75	108	47	54	21	33	40	30	10
125	239	103	136	56	71	32	40	54	40	12
※125	203	88	115	52	68	20	38	54	41	13.5
160	294	126	168	65	96	30	51	72	50	14
※160	239	113	126	62	88	25	38	72	55	18
200	315.5	158.5	157	64	102	56.5	40	72	49	14
※200	244	118	126	62	88	30	38	72	55	18

Dia	K	L	O	S	T	V	W
32	M10*1.25	M6*1.0	PT 1/8	45	33	12	10
40	M12*1.25	M6*1.0	PT 1/4	50	37	16	14
50	M16*1.5	M6*1.0	PT 1/4	62	47	20	17
63	M16*1.5	M8*1.25	PT 3/8	75	56	20	17
80	M20*1.5	M10*1.5	PT 3/8	94	70	25	22
100	M20*1.5	M10*1.5	PT 1/2	112	84	25	22
125	M27*2.0	M12*1.75	PT 1/2	140	110	32	28
※125	M27*2.0	M12*1.75	PT 1/2	136	104	32	27
160	M36*2.0	M16*2.0	PT 3/4 / P T1/2	179.5	140	40	36
※160	M36*2.0	M16*2.0	PT 3/4	174	134	40	36
200	M36*2.0	M16*2.0	PT 1/2	220	175	45	42
※200	M36*2.0	M16*2.0	PT 3/4	214	163	40	36

※2019 年新尺寸推出

# SC 附件 LB

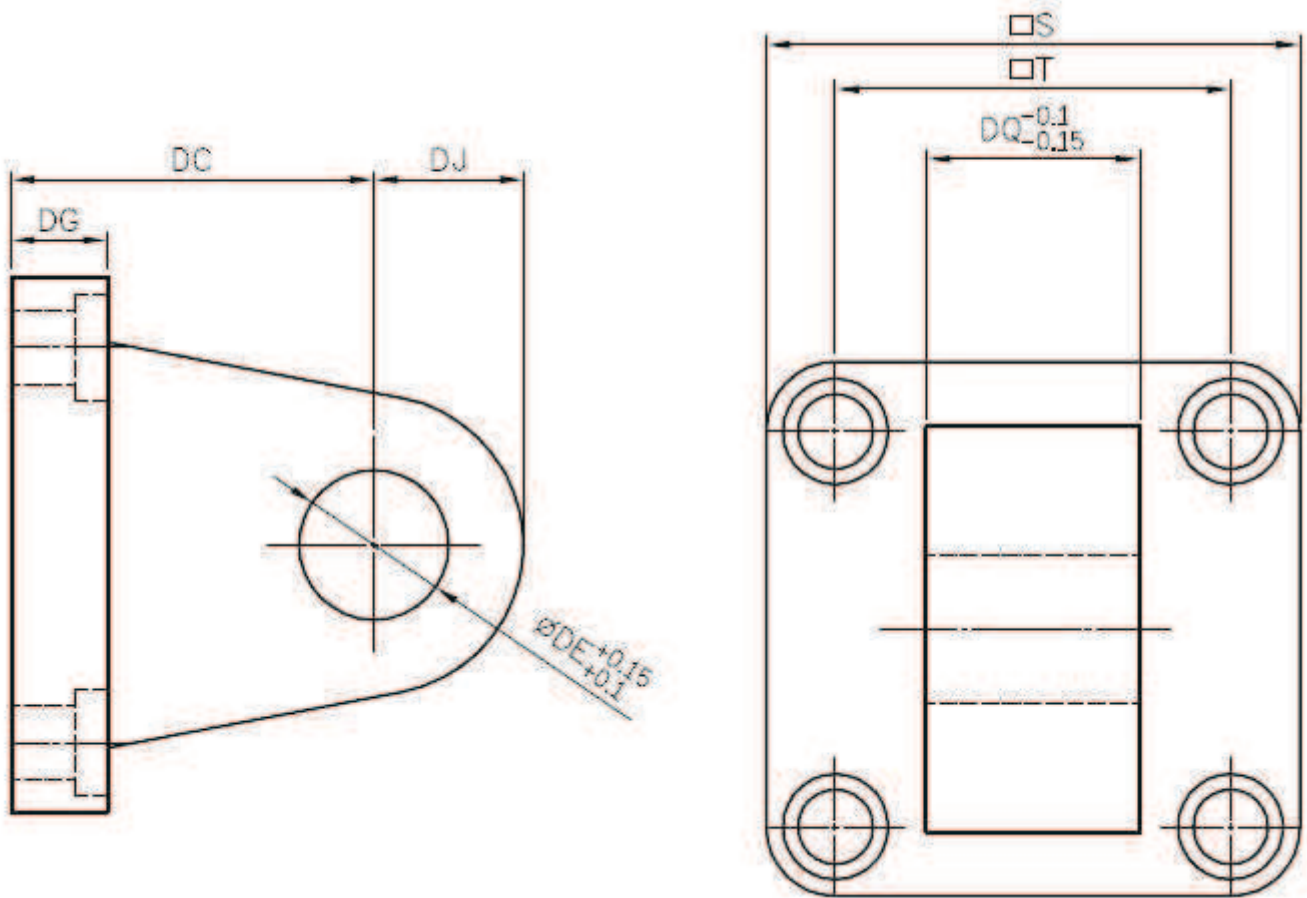
## SC Accessory: LB Foot Mounts



Dia	AA	AC	AD	AE	AF	AG	AJ	AP	AT
32	153	134	30	50	33	20.5	28	9	3
40	169	140	38	57	36	23.5	30	12	3
50	173	149	40	68	47	28	36.5	12	3
63	184	158	44	80	56	31	41	12	3
80	198	166	45	97	70	29	48	14	4
100	204	168	48	112	84	30	57	14	4

# SC 附件 CA

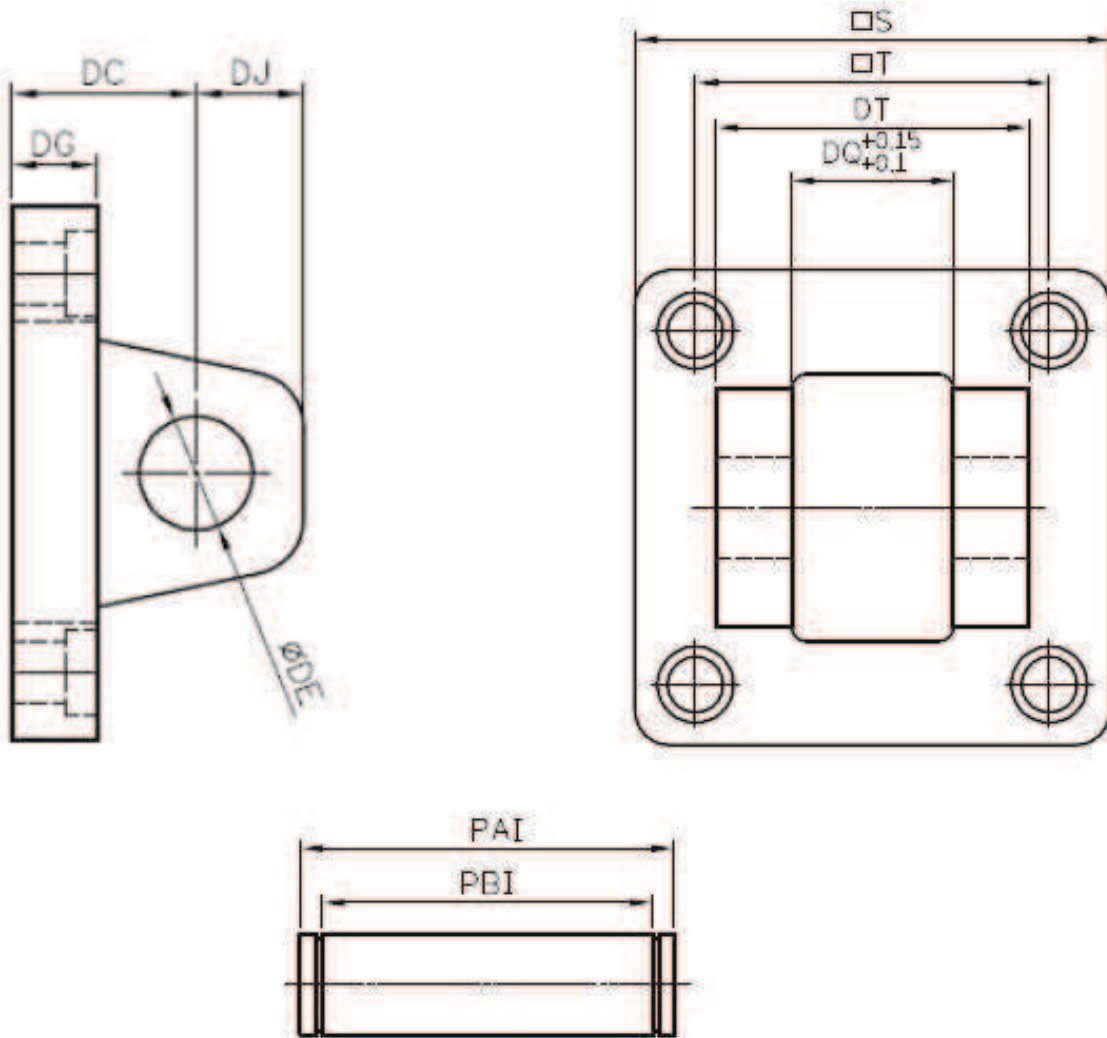
## SC Accessory: CA Male Trunnion



Dia	S	T	DC	DE	DG	DJ	DQ
32	48	33	34	12	9	14	16
40	50	37	34	14	9	14	20
50	62	47	34	14	10	15	20
63	75	56	34	14	10	15	20
80	94	70	48	20	12	20	32
100	112	84	48	20	12	20	32
125	140	110	50	25	15	25	70
160	176	140	55	30	21	27	89
200	220	175	60	38	24	30	90

# SC 附件 CB

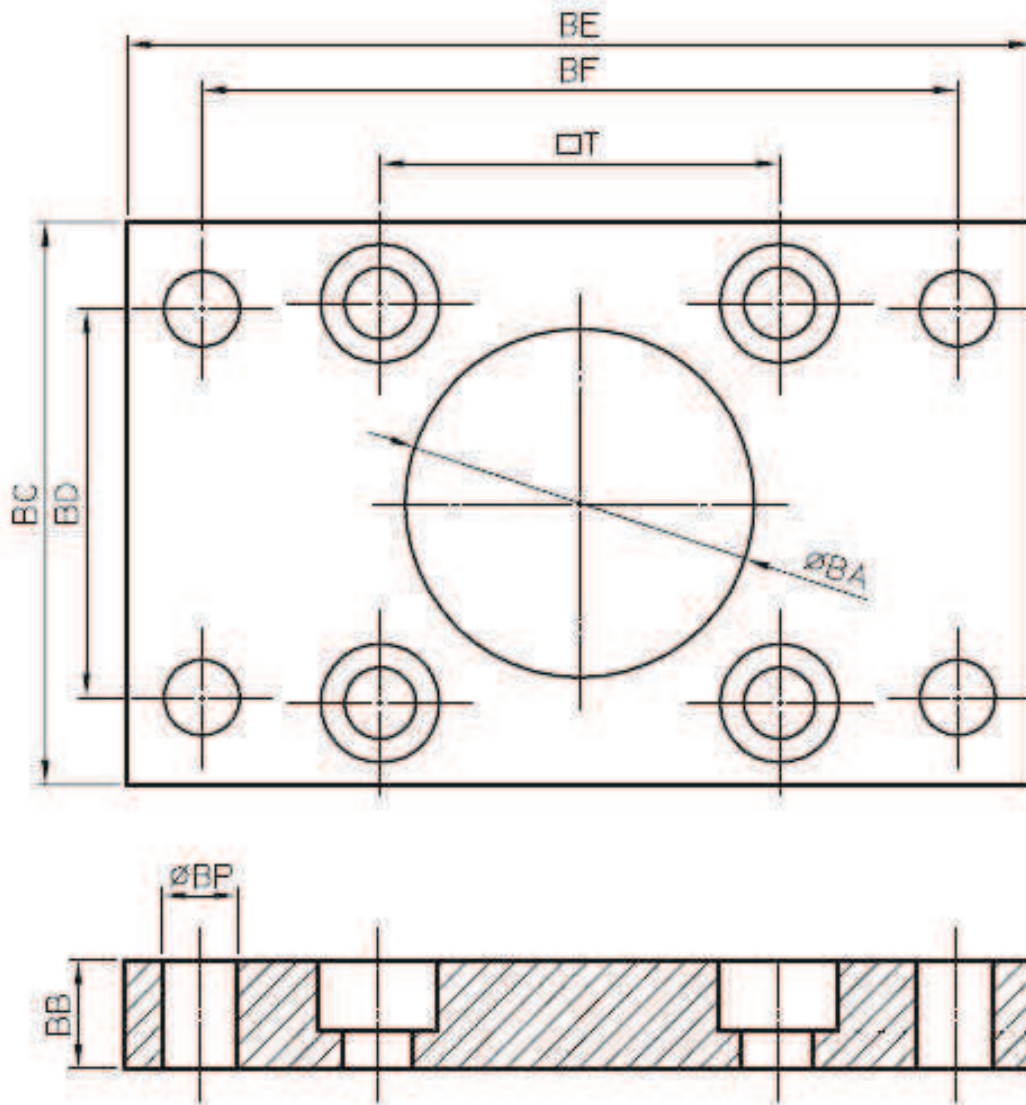
## SC Accessory: CB Female Trunnion



Dia	S	T	DC	DE	DG	DJ	DT	DQ	PAI	PBI
32	48	33	19	12	9	13	32	16	41	35
40	50	37	20	14	9	13	44	20	51	46
50	62	47	20	14	10	15	52	20	60	54
63	75	56	20	14	10	15	52	20	60	54
80	94	70	32	20	15	21	64	32	74	65
100	112	84	32	20	14	21	64	32	74	65
125	140	110	50	25	15	25	122	70	132	123
160	176	140	55	30	21	27	164	91	175	166
200	220	175	60	30	36	30	175	90	186	176

# SC 附件 FA

## SC Accessory: FA Flange



Dia	BA	BB	BC	BD	BE	BF	BP	T
32	28.3	10	47	33	72	58	7	33
40	32	10	52	36	84	70.5	7	37
50	39	11	64	47	104	86.5	9	47
63	39	12	74	56	116.5	99	9	56
80	48.5	16	92	70	142	118.5	11	70
100	48	17	112	84	158	138	11	84
125	60.5	20	140	90	224	180	16.5	110
160	65.5	21.5	180	115	280.5	230	18	140
200	75	25	220	135	320	270	22	175



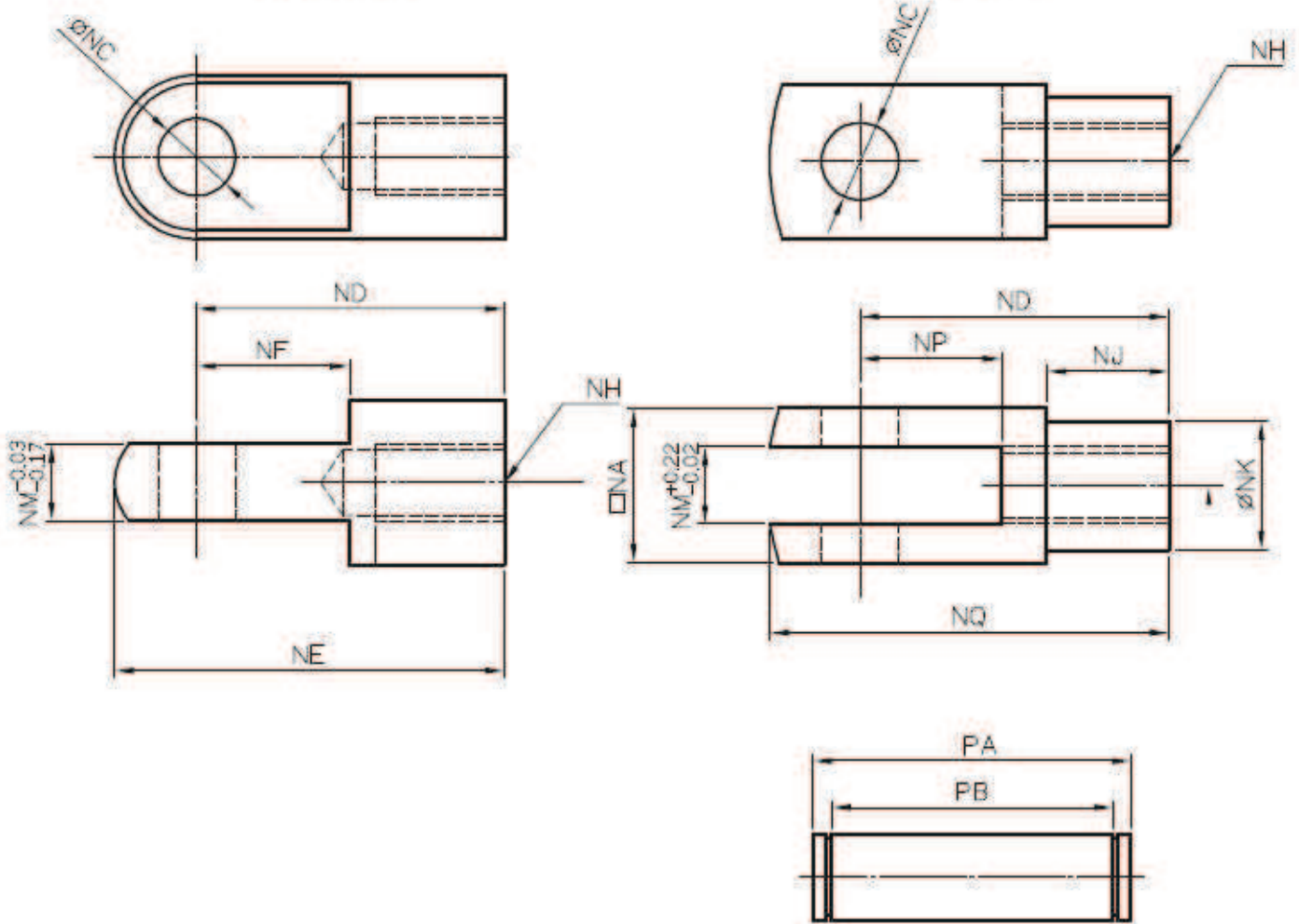
# SC 附件 I&Y 接頭

SC Accessory: Rod I End & Rod Fork End



I 接頭

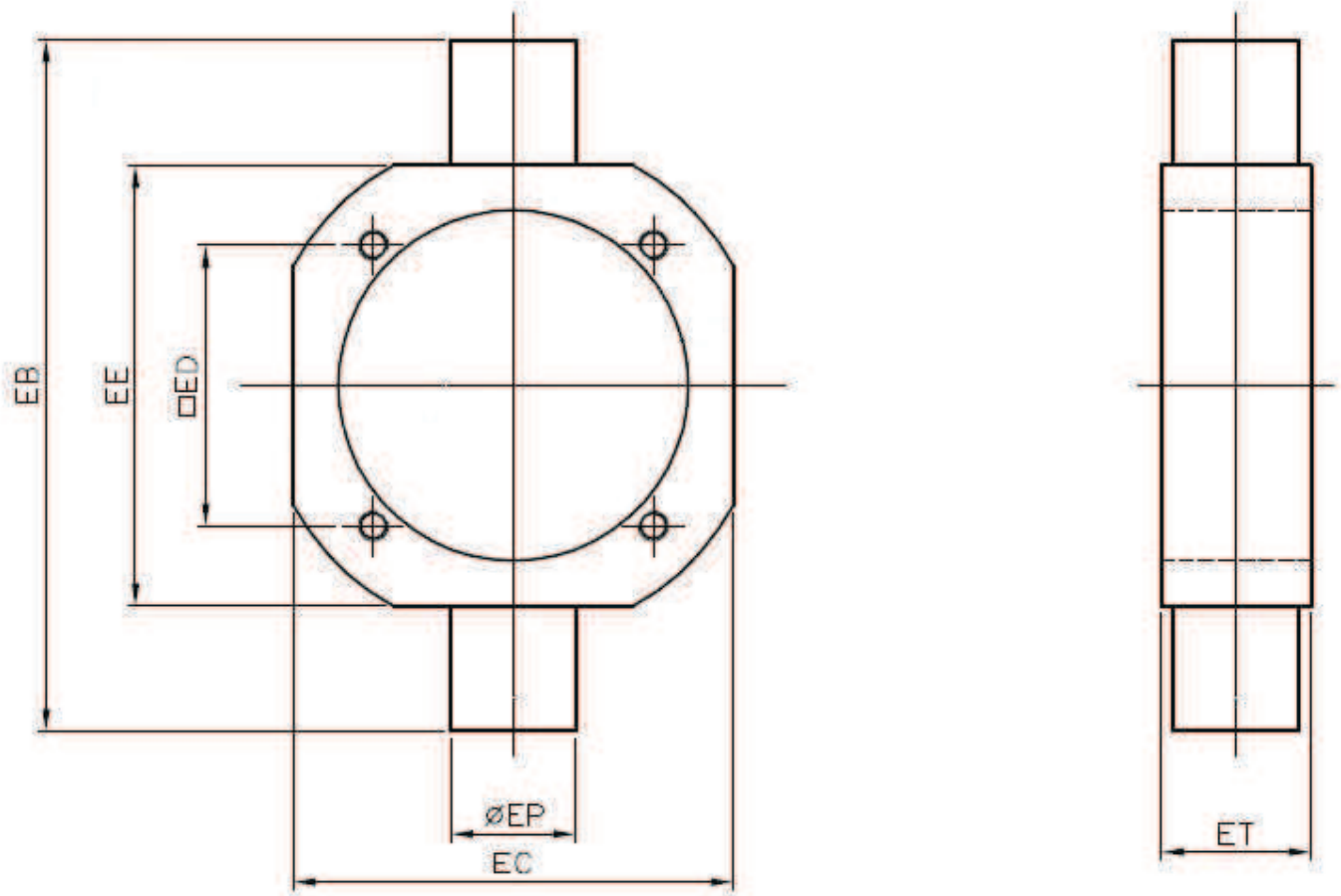
Y 接頭



Dia	NA	NC	ND	NE	NF	NH	NJ	NK	NM	NP	NQ	PA	PB
32	20	10	40	48.5	19	M10*1.25	15	18	10.4	21	52	26.5	20.5
40	24	12	48	60	24	M12*1.25	18	20	12.2	24	62	30	24.5
50	32	16	64	79	32	M16*1.5	24	27	16.2	32	83.5	39.5	33
63	32	16	64	79	32	M16*1.5	24	27	16	32	83.5	39.5	33
80	40	20	80	100	37	M20*1.5	30	35	20	40	105	48	41
100	40	20	80	100	37	M20*1.5	30	35	20	40	105	48	41
125	55.3	30	111	-	-	M27*2.0	36	42	30.3	57	147	65	56
160	70	35	144	205	48	M36*2.0	54	60	35	72	188	83	70
200	70	35	144	205	48	M36*2.0	54	60	35	72	188	83	70

# SC 附件 TC

SC Accessory: TC Center Trunnion



Dia	EB	EC	ED	EE	EP	ET
32	89	52	33	55	16	30
40	116	63	37	63	25	31
50	127	75	47	74	25	32
63	140	90	56	89	25	32
80	165	105	70	114	25	36
100	181	130	84	133	25	40
125	211	160	110	160.5	30	40